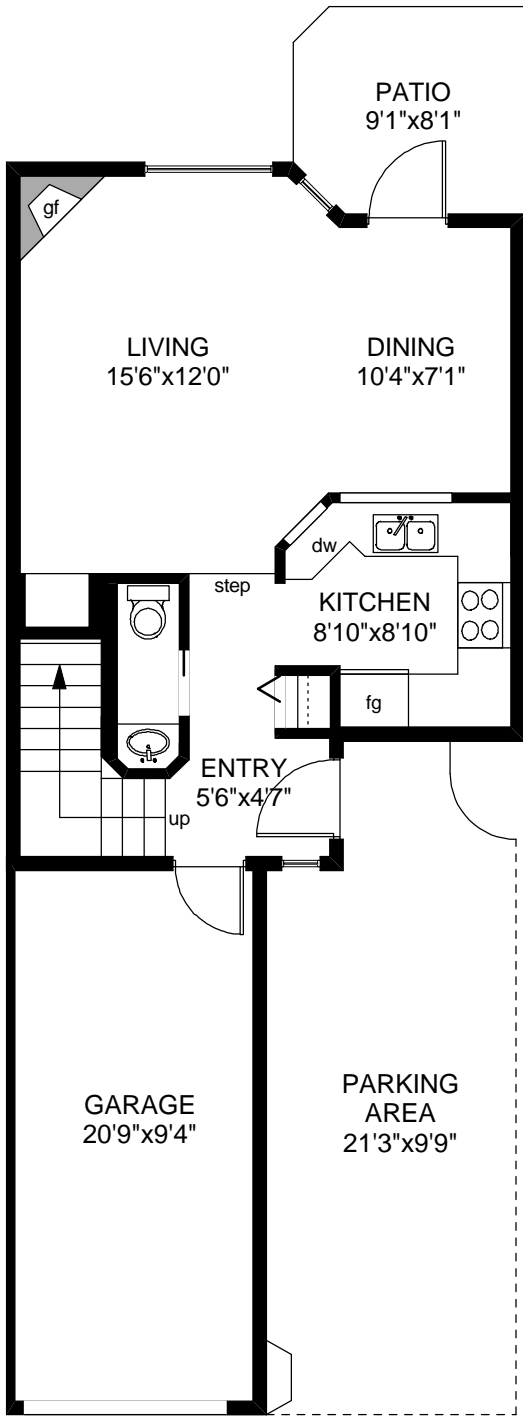

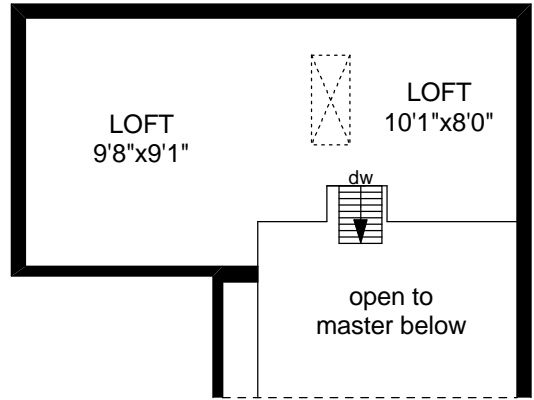



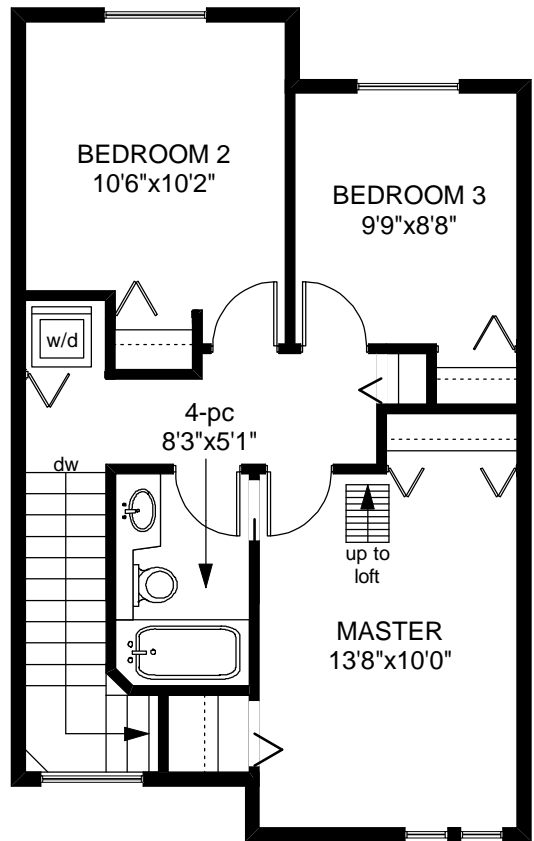
# 12-922 ARM STREET




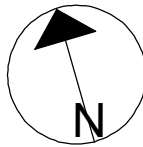
 MAIN FLOOR  
 483 SQ.FT



 LOFT  
 177 SQ.FT



 UPPER FLOOR  
 588 SQ.FT



	FINISHED SQ. FT.	UNFINISHED SQ. FT.	TOTAL SQ. FT.
MAIN	483	0	483
UPPER	588	0	588
LOFT	177	0	177
<b>TOTAL</b>	<b>1248</b>	<b>0</b>	<b>1248</b>
GARAGE	0	207	207
PATIO	0	70	70

PREPARED FOR THE EXCLUSIVE USE OF  
 ANDREW MARA, RILEY JANES & SHAWN ADYE  
 OF PEMBERTON HOLMES LIMITED

MEASURED ON: 02/27/09  
 DRAWING FILE: 06971

**Tafe Measure** VICTORIA, B.C.  
 Ph. 883-8894  
 www.tafemeasure.com