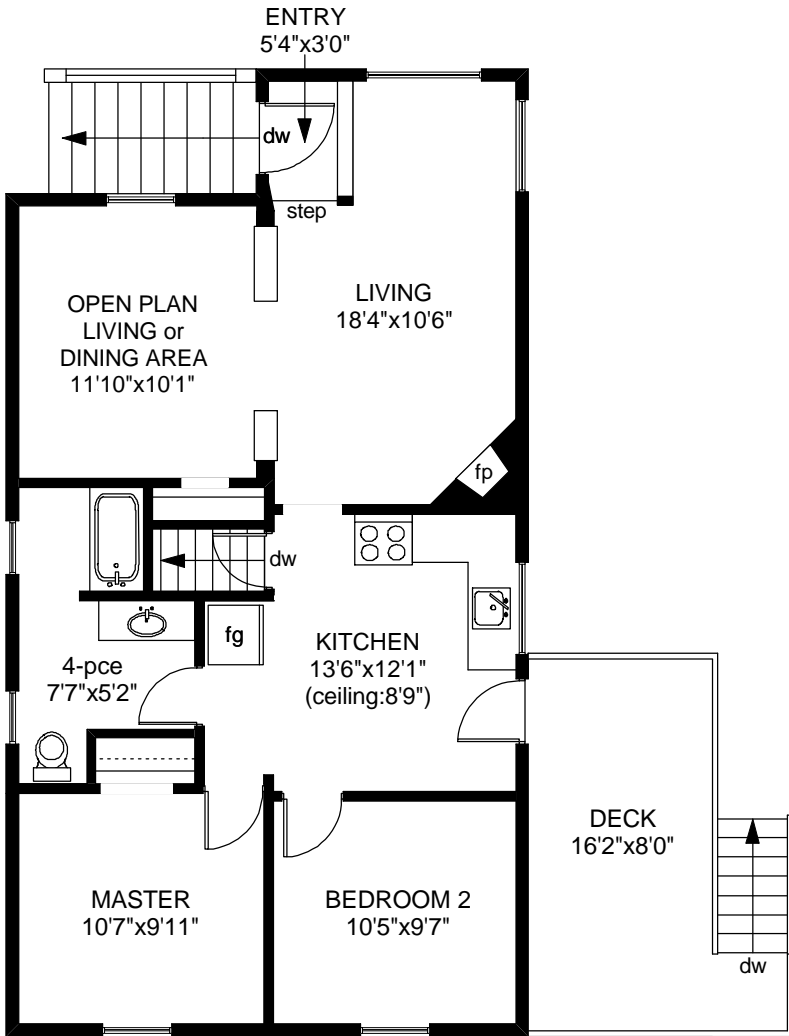

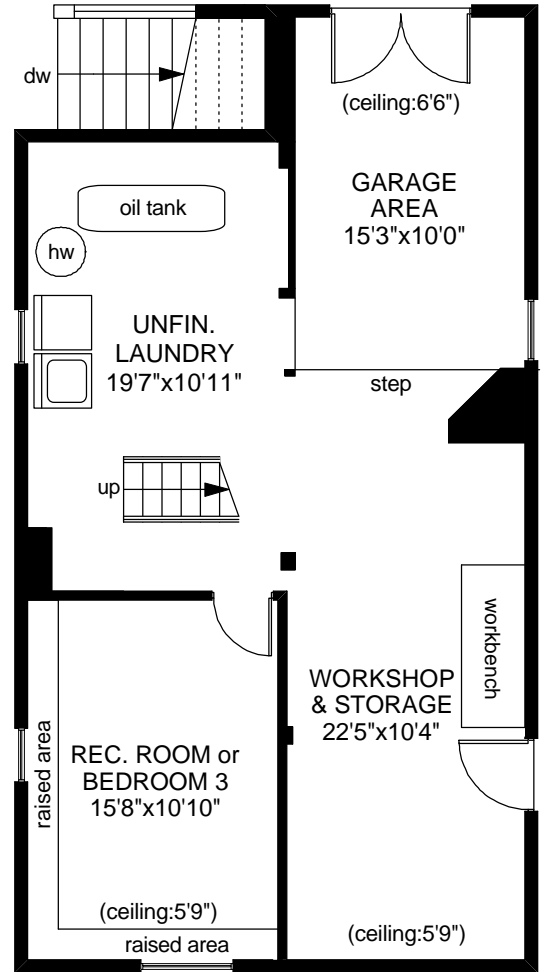


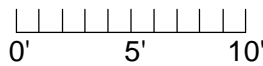
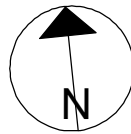
1123 BAY STREET



 UPPER FLOOR
894 SQ.FT



 LOWER FLOOR
717 SQ.FT



	FINISHED SQ. FT.	UNFINISHED SQ. FT.	TOTAL SQ. FT.
UPPER	894	0	894
LOWER	0	717	717
TOTAL	894	717	1611
GARAGE	0	177	177
DECK	0	149	149

PREPARED FOR THE EXCLUSIVE USE OF
ANDREW MARA, RILEY JANES & SHAWN ADYE
OF PEMBERTON HOLMES LIMITED

MEASURED ON: 07/15/09
DRAWING FILE: 07413

Tafe Measure VICTORIA, B.C.
Ph. 883-8894
www.tafemeasure.com