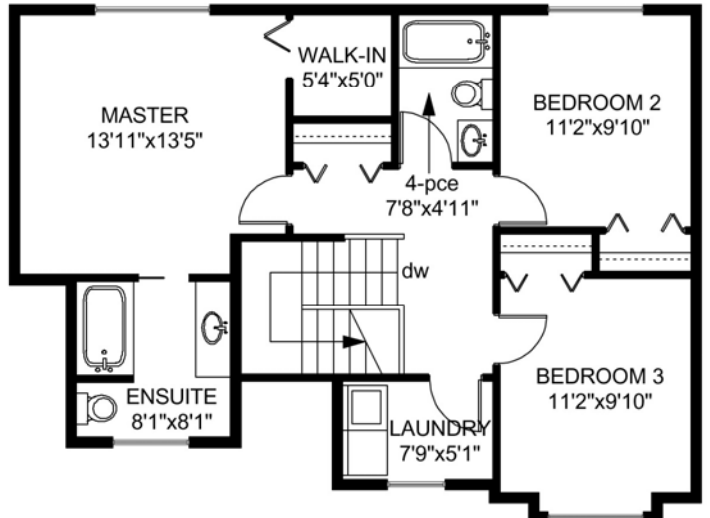
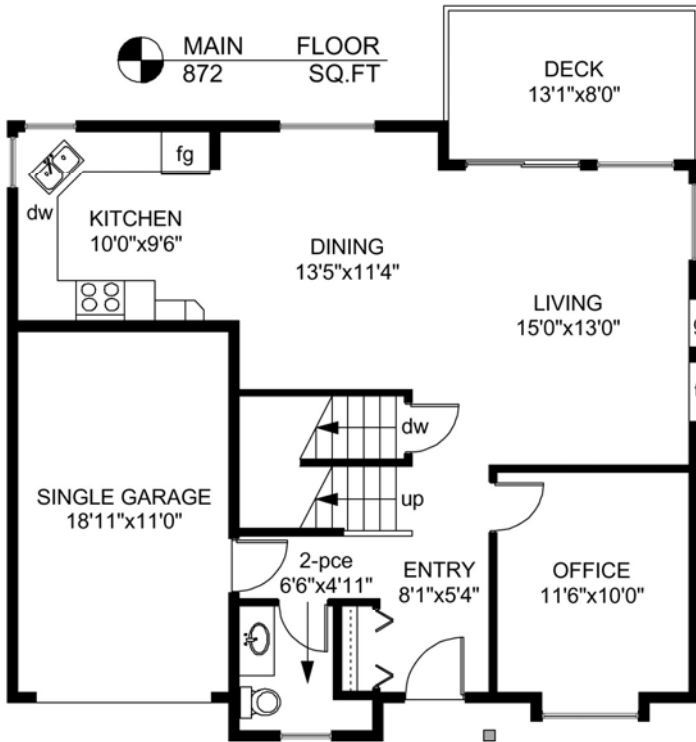


668 KINGSVIEW RIDGE

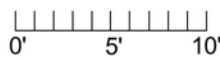
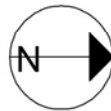
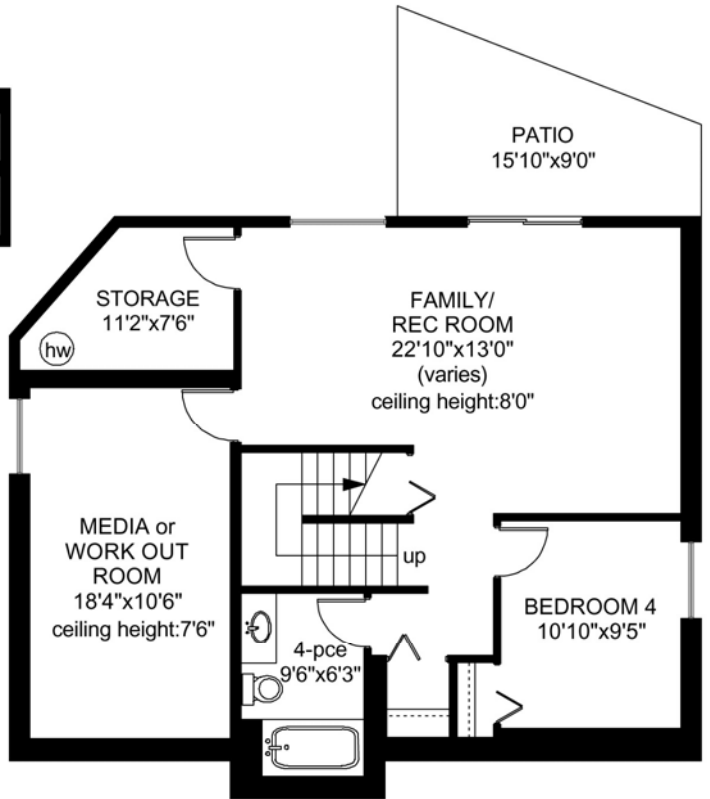
UPPER FLOOR
850 SQ.FT



MAIN FLOOR
872 SQ.FT



LOWER FLOOR
1024 SQ.FT



	FINISHED SQ. FT.	UNFINISHED SQ. FT.	TOTAL SQ. FT.
MAIN	872	0	872
UPPER	850	0	850
LOWER	1024	0	1024
TOTAL	2746	0	2746
GARAGE	0	233	233
DECK	0	105	105
PATIO	0	125	125

**PEMBERTON
HOLMES**

• ESTABLISHED 1887 •

PREPARED FOR THE EXCLUSIVE USE OF
ANDREW MARA, RILEY JANES & SHAWN ADYE
OF PEMBERTON HOLMES LIMITED

MEASURED ON: 03/09/09
DRAWING FILE: 06996

Tafe Measure VICTORIA, B.C.
Ph. 883-8894
www.tafemeasure.com